



# Virginia Tech Dendrology

**Carolina hemlock** *Pinaceae Tsuga caroliniana* Engelm.   symbol: **TSCA2**

**Leaf:** Evergreen, flattened, single needles, 1/2 to 3/4 inch long, not tapering towards the round tip; dark green above, paler with two bluish-white stomatal lines beneath; needles radiate out from twig in all directions and are attached with a small petiole.

**Flower:** Species is monoecious; male cones small and yellowish; females small and greenish; both males and females occur near branch tips.

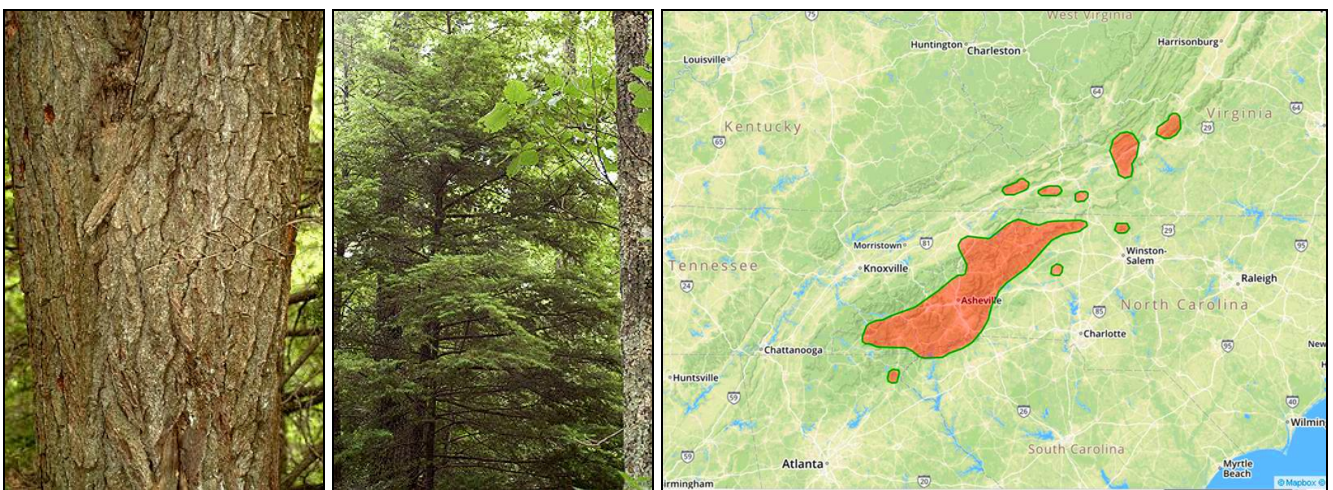
**Fruit:** Woody light brown cone, 1 to 1 1/2 inches, when dry scales stick out at nearly right angles, scales longer than they are wide.

**Twig:** Slender, yellowish brown, turning gray-brown, buds small and round.

**Bark:** Dark, reddish brown, develops fissures with scaly ridges, inner bark often showing maroon patches.

**Form:** Pyramidal crown with hanging branches, almost lacy looking. Reaches a height of 40 to 60 feet, 1 to 1 1/2 feet in diameter.

**Looks like:** [eastern hemlock](#) - [western hemlock](#) - [mountain hemlock](#) - [English yew](#)



**Additional Range Information:** *Tsuga caroliniana* is native to North America. Range may be expanded by planting. See the full-size PDF map.

**External Links:** [USDAFS FEIS Silvics](#) - [USDA Plants Database](#)

All material © 2019 Virginia Tech Dept. of Forest Resources and Environmental Conservation; Photos and text by: John Seiler, Edward Jensen, Alex Niemiera, and John Peterson; Silvics reprinted from [Ag Handbook 654](#); [range map source information](#)