
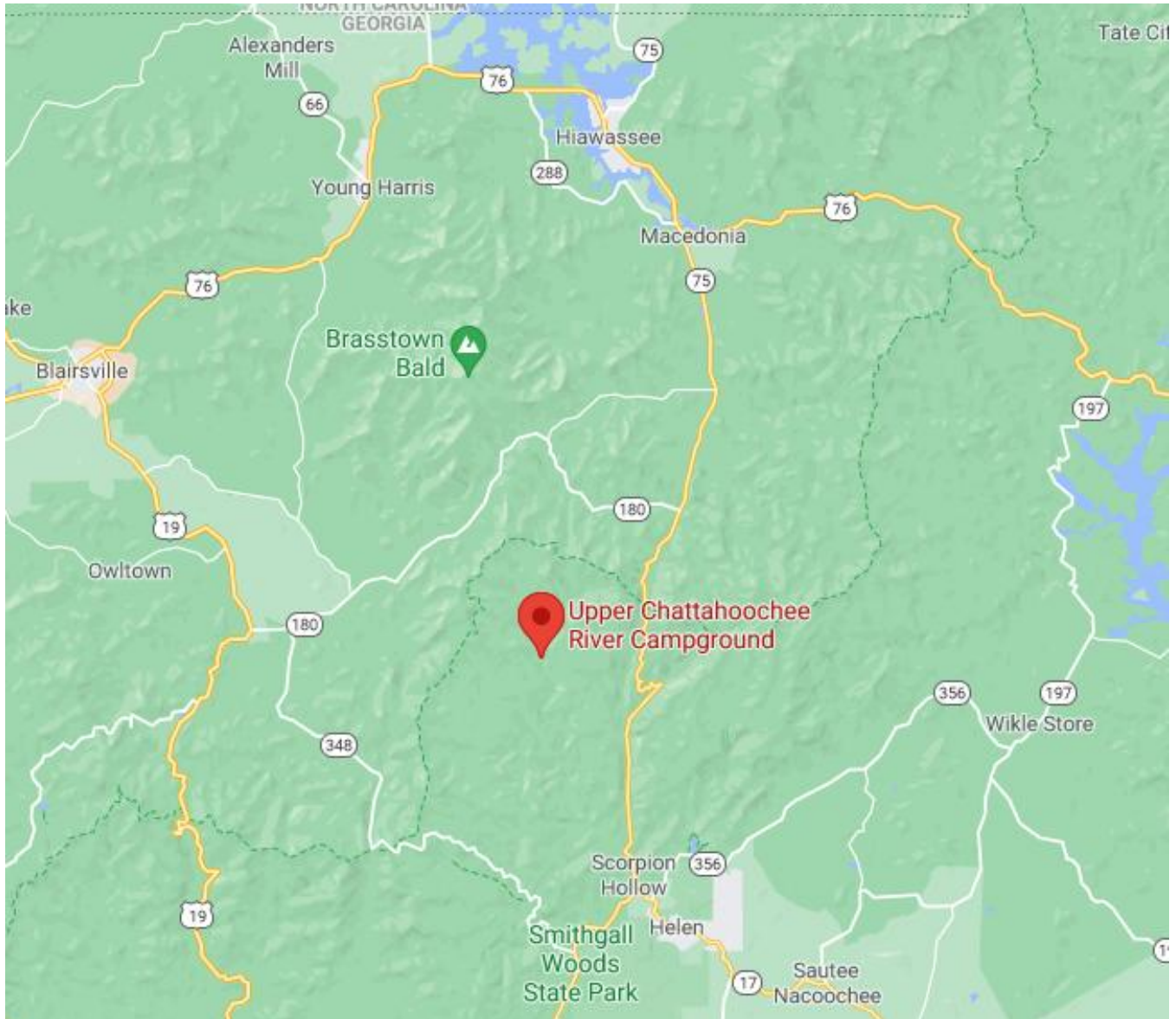


## Project Details for Hemlock Treatment Project Upper Chattahoochee River Campground HCA 59

<b>Date:</b>	Sunday, July 18, 2021	
<b>Event:</b>	Service event to treat or retreat the hemlocks in Upper Chattahoochee River Campground in Towns County. According to prior treatment logs, we expect to treat 240+ trees.	
<b>Notice:</b>	As SGH is committed to protecting the health and safety of our volunteers at all events, we will be following CDC guidelines regarding the <i>coronavirus</i> pandemic. > If you have, or recently have had, a fever or any other symptoms of COVID-19, please do not sign-up and do seek appropriate medical help. > We will maintain a 6-foot social distancing except for family units. > Face coverings will not be required but will be available for those wishing to wear them.	
<b>Where to Meet:</b>	Upper Chattahoochee River Campground HCA is located at the end of the Chattahoochee River Rd. We will meet at the campground, where parking is plentiful. <b>Signs will be posted</b> at the GA Hwy 17/75 Wilks Rd. turn-off. Stay on the main gravel road. There are a couple turn-offs, but they are short dead-ends with FS berms plowed up. <b>See driving directions and maps following.</b>	
<b>Schedule:</b>	<b>9:00 a.m.</b> – All SGH volunteers report. We will meet at the campground parking area. <b>9:30 a.m.</b> – Hemlock Helpers meet to receive a briefing on the condition of the hemlocks, treatment process to be used, and safety reminders. You will be organized into small teams including one experienced SGH Facilitator per team, receive your equipment and supplies, be directed to your treatment site, and begin treating trees. <b>12:00 p.m.</b> – Treatment teams will assemble at the meeting site / mixing station to clean their equipment and to have lunch together. <b>12:30 p.m.</b> - After lunch we will complete site treatment and receive further instructions. <b>By 3:30 p.m.</b> – Our target project completion time is 3:30 p.m.	
<b>Terrain:</b>	The terrain in the Upper Chattahoochee River Campground HCA is river bottom campsite area. Undergrowth is moderate with <b>considerable poison ivy in many areas</b> . We'll make sure everyone is assigned to a work site or job assignment where they can be safe and comfortable.	
<b>What to Wear:</b>	Dress for the weather and the activity, including long pants and long sleeves, gloves and sturdy footwear, and rain gear in case of light rain. Nitrile gloves will be provided for those who will be handling chemicals. Hardhats will also be provided and required to wear for your safety. <b>Work gloves and tall boots strongly recommended.</b>	
<b>What to Bring:</b>	Pack a sack lunch and bring it with you to the treatment site. Bring a personal water bottle and a camera if you like. Your favorite hiking stick and a small day pack to carry things may come in handy. We'll provide some snacks and extra bottled water. If you have any serious allergies (like bee stings), bring whatever you need to manage the situation.	
<b>Don't Bring:</b>	This is an environmentally friendly, pack-it-in pack-it-out event, so please don't bring any glass or Styrofoam items. Also, as much as we love dogs, please don't bring them this time.	
<b>Registration:</b>	Participants must sign up in advance by Jon Jones at <a href="mailto:jdjones611@gmail.com">jdjones611@gmail.com</a> or 910-987-0306. If you have questions, please call or email before project date.	



**Map showing location of Upper Chattahoochee River Campground  
between Helen and Hiawassee**



## Driving Directions

### From East of Hiawassee at the intersection of US Hwy 76/GA Hwy 17/75:

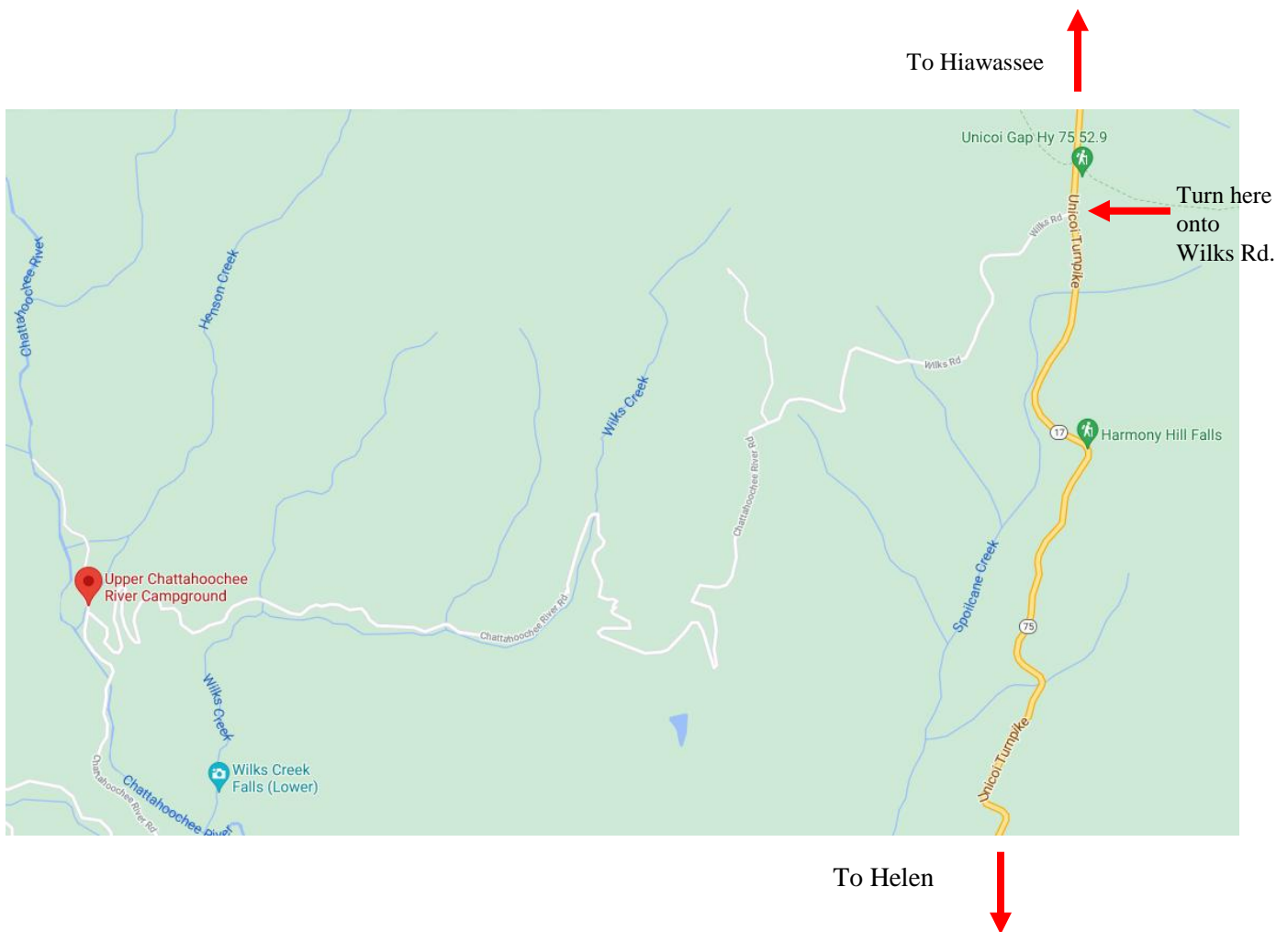
Travel south on GA Hwy 17/75 (Unicoi Turnpike) for 8.7 miles, and you will cross Unicoi Gap/AT parking area.

- Approximately 100 yards past AT parking, turn right on Wilks Rd. (see 2 signs - Mark Trail Wilderness and Chattahoochee Wildlife Mgmt Area.)
- Turn right onto Wilks Rd. / Chattahoochee River Rd. (FS Rd 44) and follow it for 4.6 miles (approximately 26 minutes) to the group campground parking. This is our meeting point.
- Note: About 1 mile in, you will see a sign – FS 44 Closed – ignore this sign.

### From Helen:

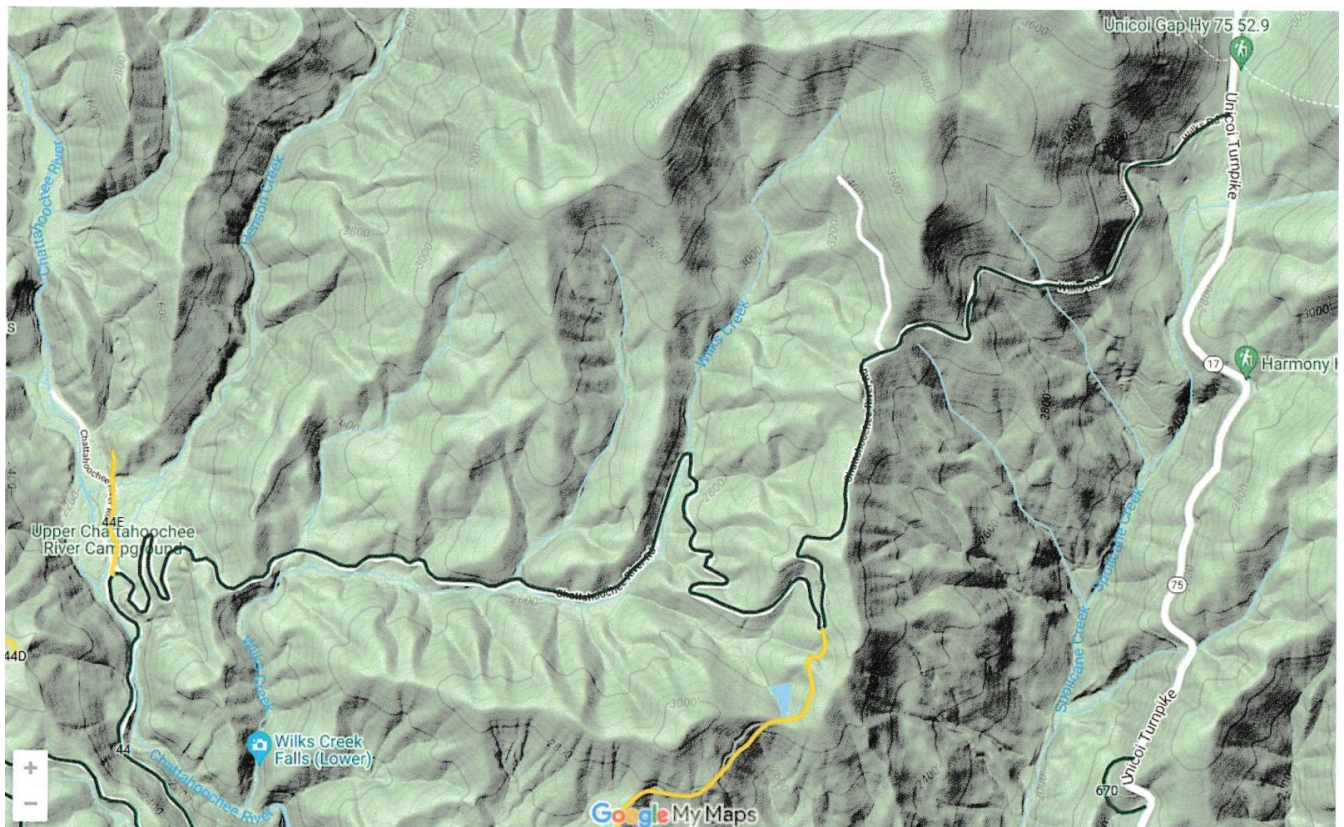
Travel north on GA Hwy 17/75 (Unicoi Turnpike) past mile marker 15 and look for the Mark Trail Wilderness and Chattahoochee Wildlife Mgmt Area signs on the left.

- If you come to the Unicoi Gap/AT parking on 17/75, you've gone 100 yards too far.
- Turn left onto Wilks Rd. / Chattahoochee River Rd. (FS Rd 44) and follow it for 4.6 miles to the group campground parking. This is our meeting point.





Google map showing the Upper Chattahoochee River Campground.



U. S. Forest Service map of the Upper Chattahoochee River Campground hemlock conservation area.

